



STATE OF ISRAEL



Israel's Agency for International
Development Cooperation
Ministry of Foreign Affairs

MATC

MASHAV International Agricultural
Training Center

In cooperation with

giz

Deutsche Gesellschaft
für Internationale
Zusammenarbeit (GIZ) GmbH

**MASHAV - Israel's Agency for International
Development Cooperation**

and

MATC – MASHAV Agricultural Training Center

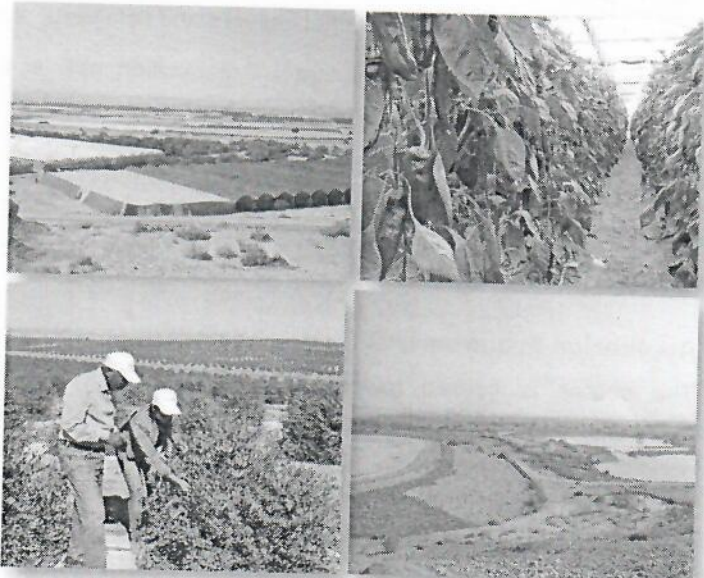
invite English – speaking professionals
from African countries to participate in the

International Course:

Agricultural Development in Arid Regions

25th June - 9th July, 2019

Shefayim – Israel



Background

Agricultural sustainability in arid and semi-arid regions faces combined challenges of efficient use, protection and development of water resources, management of soil salinity, and creation of long-term economically and environmentally sound operations. (Ben Gal A.; et al, 2006)

With more than 50% of its territory classified as desert area, Israel has developed a flourishing agriculture demonstrating that the true value of the land is a function of the tenacity of its people.

Since its independence in 1948, the State of Israel has adapted to the constant growth of its population, facing limited availability of land and water resources. Framed in a national development policy, the various sectors knew how to join efforts, in order to achieve the efficient use of scarce resources, ensure food production to meet the domestic demand and establish strategies that lead to the production of high-quality products destined to export.

The determination of farmers and their close collaboration with research institutes, supporting organizations and a thriving industry, have fostered the development of an intensive and highly technified agricultural production, even in extremely arid regions.

Globalized economy as well as other threats such as desertification processes require continuous search for innovative solutions in order to ensure farmers' income, efficient use of natural resources and protection of the environment.

About the Course

Aims

The training program aims to share with participants Israel's vision, strategies and holistic approach to sustainable agricultural development of drylands

The course intends also to create a framework for discussion and analysis in order to evaluate the possible adaptation of new strategies and technologies to the conditions of each participating country.

Main Subjects

The course will include professional lectures and field visits. It will cover the following topics:

- Agricultural development in Israel: Organization, policies and strategies
- Soil and water management
- Intensive crop production and marketing systems
- Irrigation and fertigation
- Implementation of agro-technologies
- Research and Development

Application Requirements

The course is geared towards professionals from governmental and non-governmental institutions, universities; research institutes and/or private sector, from African English-speaking countries, involved in agricultural development in arid and semi-arid regions on a national, regional or local level.

Candidates should hold an academic degree in related disciplines and at least two years of professional experience. A full command of English is required.

Application forms

Application forms and other information can be obtained at the nearest Israeli mission or at MASHAV's website: <http://mashav.mfa.gov.il/MFA/mashav/Courses/Pages/default.aspx>.

Completed application forms, including the health declaration and recommendation letters, should be sent to the Israeli mission in the respective country, until **29th April, 2019**.

General Information

Arrival and Departure

Arrival date: June 25th, 2019 (Hotel rooms available from 14:00)

Opening date: June 26th, 2019

Closing date: July 8th, 2019

Departure date: July 9th, 2019 (Check out: 11:00)

Participants must arrive at the training center on the arrival date and leave on the departure date. Early arrivals/late departures if required, must be arranged by the participants themselves. Participants will have to cover additional costs.

Location and Accommodation

The course will be held at MATC - MASHAV's International Agricultural Training Center in Kibbutz Shefayim, situated 20 km north of Tel Aviv and near the coastal city of Netanya. Participants will be accommodated at the Hotel of Kibbutz Shefayim in double rooms (two participants per room).

MASHAV awards a limited number of scholarships. The scholarship covers the cost of the training program including lectures and field visits, full board accommodation in double rooms, health insurance and transfers to and from the airport. Airfares and daily allowance are not included in the scholarship.

Health Services

Medical insurance covers medical services and hospitalization in case of emergency. It does not cover the treatment of chronic or serious diseases, specific medications taken by the participant on a regular basis, dental care and eyeglasses. Participants will be responsible for all other expenses, which are not covered by the insurance policy. Health authorities recommend that visitors to Israel make sure they have been vaccinated against tetanus in the last ten years.

About MASHAV

MASHAV – Israel's Agency for International Development Cooperation is dedicated to providing developing countries with the best of Israel's experience in development and planning. As a member of the family of nations, The State of Israel is committed to fulfilling its responsibility to contribute to the fight against poverty and to the global efforts to achieve sustainable development. **MASHAV**, representing Israel and its people, focuses its efforts on capacity building, sharing relevant expertise accumulated during Israel's own development experience to empower governments, communities and individuals to improve their own lives. **MASHAV's** approach is to ensure social, economic and environmental sustainable development, and is taking active part in the international community's process of shaping the Post-2015 Agenda, to define the new set of the global Sustainable Development Goals (SDG).

MASHAV's activities focus primarily on areas in which Israel has a competitive advantage, including agriculture and rural development; water resources management; entrepreneurship and innovation; community development; medicine and public health, empowerment of women and education. Professional programs are based on a "train the trainers" approach to institutional and human capacity building, and are conducted both in Israel and abroad. Project development is supported by the seconding of short and long-term experts, as well as on-site interventions.

Since its establishment, **MASHAV** has promoted the centrality of human resource enrichment and institutional capacity building in the development process – an approach that has attained global consensus.

<http://mashav.mfa.gov.il>

<https://www.facebook.com/MASHAVisrael>

About MATC

MATC - MASHAV's International Agricultural Training Center - specializes since 1963 in human capacity building and training programs in the fields of agriculture, water management, environment and rural development. **MATC** conducts international, regional and country tailor made courses as well as professional visits, workshops and conferences based on Israeli agricultural know-how, innovation spirit and development experience. Its training programs, conducted in English, Spanish, French, Russian, and Arabic, are specifically designed to improve agricultural production in developing countries, to promote food security and to create partnerships as well as ongoing international cooperation for sustainable development.

MATC works in close cooperation with Israel's Ministry of Agriculture and Rural Development (MOAG and its Agricultural Research Organization (ARO). **MATC** also cooperates with universities, agricultural organizations, farmers and the private sector.

<https://www.facebook.com/MATCShefayim>

For further information, please contact:

